

Index No. 17-5217

# CERTIFICATE OF LOCATION OF GOVERNMENT CORNER

EAST QUARTER Corner of Section 5, Township 105, Range 41, 5TH P.M.

STATE OF MINNESOTA, County of MURRAY

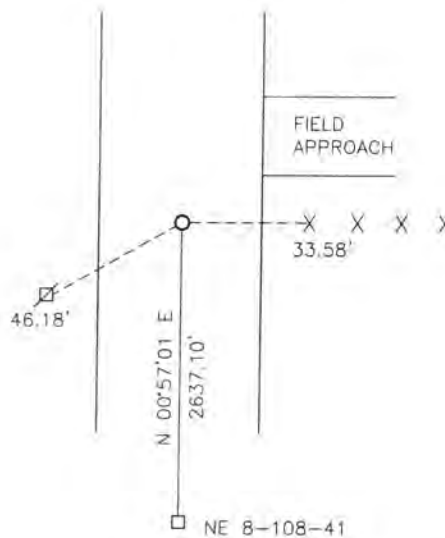
At the corner location shown on the sketch:

On 06-29-2017 found a RAILROAD SPIKE.

left monument as found,  lowered monument,  removed monument (explain)

On 06-29-2017 placed a SURVEY SPIKE WITH SEAL #43844.

## SKETCH OF REFERENCE TIES



Minnesota State Plane Coordinate  
System Murray County Datum  
NAD83 (1996)

N: 129267.415  
E: 495452.286

Nail and bottle cap in utility pole SW 46.18'  
Nail and bottle cap in corner fence post East 33.58'

Statement of evidence relative to this corner location is on back of page.

I hereby certify that this document and the data contained herein was prepared by me or under my direct supervision

[Signature] 2/20/18  
SIGNATURE DATE

Registration No. 43844

Land Surveyor,  Professional Engineer  
 County Surveyor,  County Engineer

STATE OF MINNESOTA, }  
COUNTY OF MURRAY, } SS.

I hereby certify that the within Instrument was filed in this office for record on the 26<sup>TH</sup> day of MARCH A.D. 20 18 at 9:00 o'clock A. M, and was duly recorded as Document No.         

[Signature]  
County Recorder

## Statement of Evidence

In 1861, Wellman and Smoot did the original subdivision of the township.

On January 14, 1940, the corner is recorded as a concrete monument.

No Date, MNDOT right of way plans show a found concrete monument. They set a railroad spike above it.

On June 29, 2017, Bueltel-Moseng Land Surveying found a railroad spike at the corner. We set a survey spike with seal #43844 over it.